

# The why and how our trauma patients die: A prospective Multicenter Western Trauma Association study

Rachael A. Calcutt, MD, Lucy Z. Kornblith, MD, Amanda S. Conroy, BSN, Anamaria J. Robles, MD, Jonathan P. Meizoso, MD, Nicholas Namias, MD, David E. Meyer, MD, Amanda Haymaker, BS, Michael S. Truitt, MD, Vaidehi Agrawal, PhD, James M. Haan, MD, Kelly L. Lightwine, MPH, John M. Porter, MD, Janika L. San Roman, MPH, Walter L. Biffl, MD, Michael S. Hayashi, MD, Michael J. Sise, MD, Jayraan Badiee, MPH, Gustavo Recinos, MD, Kenji Inaba, MD, Thomas J. Schroepel, MD, Emma Callaghan, BS, Julie A. Dunn, MD, Samuel Godin, BS, Robert C. McIntyre, Jr, MD, Erik D. Peltz, DO, Patrick J. O'Neill, MD, PhD, Conrad F. Diven, MD, Aaron M. Scifres, MD, Emily E. Switzer, MD, Michaela A. West, MD, PhD, Sarah Storrs, MD, Daniel C. Cullinane, MD, John F. Cordova, MD, Ernest E. Moore, MD, Hunter B. Moore, MD, PhD, Alicia R. Privette, MD, Evert A. Eriksson, MD, Mitchell Jay Cohen, MD, and Western Trauma Association Multicenter Study Group, San Francisco, California

## AAST Continuing Medical Education Article

### Accreditation Statement

This activity has been planned and implemented in accordance with the Essential Areas and Policies of the Accreditation Council for Continuing Medical Education through the joint providership of the American College of Surgeons and the American Association for the Surgery of Trauma. The American College of Surgeons is accredited by the ACCME to provide continuing medical education for physicians.

### AMA PRA Category 1 Credits™

The American College of Surgeons designates this journal-based CME activity for a maximum of 1 AMA PRA Category 1 Credit™. Physicians should claim only the credit commensurate with the extent of their participation in the activity.

Of the AMA PRA Category 1 Credit™ listed above, a maximum of 1 credit meets the requirements for self-assessment.

Credits can only be claimed online



AMERICAN COLLEGE OF SURGEONS

Inspiring Quality:

Highest Standards, Better Outcomes

100+years

### Objectives

After reading the featured articles published in the *Journal of Trauma and Acute Care Surgery*, participants should be able to demonstrate increased understanding of the material specific to the article. Objectives for each article are featured at the beginning of each article and online. Test questions are at the end of the article, with a critique and specific location in the article referencing the question topic.

### Claiming Credit

To claim credit, please visit the AAST website at <http://www.aast.org/> and click on the "e-Learning/MOC" tab. You must read the article, successfully complete the post-test and evaluation. Your CME certificate will be available immediately upon receiving a passing score of 75% or higher on the post-test. Post-tests receiving a score of below 75% will require a retake of the test to receive credit.

### System Requirements

The system requirements are as follows: Adobe® Reader 7.0 or above installed; Internet Explorer® 7 and above; Firefox® 3.0 and above, Chrome® 8.0 and above, or Safari™ 4.0 and above.

### Questions

If you have any questions, please contact AAST at 800-789-4006. Paper test and evaluations will not be accepted.

### Disclosure Information

In accordance with the ACCME Accreditation Criteria, the American College of Surgeons, as the accredited provider of this journal activity, must ensure that anyone in a position to control the content of *J Trauma Acute Care Surg* articles selected for CME credit has disclosed all relevant financial relationships with any commercial interest. Disclosure forms are completed by the editorial staff, associate editors, reviewers, and all authors. The ACCME defines a 'commercial interest' as "any entity producing, marketing, re-selling, or distributing health care goods or services consumed by, or used on, patients." "Relevant" financial relationships are those (in any amount) that may create a conflict of interest and occur within the 12 months preceding and during the time that the individual is engaged in writing the article. All reported conflicts are thoroughly managed in order to ensure any potential bias within the content is eliminated. However, if you perceive a bias within the article, please report the circumstances on the evaluation form.

Please note we have advised the authors that it is their responsibility to disclose within the article if they are describing the use of a device, product, or drug that is not FDA approved or the off-label use of an approved device, product, or drug or unapproved usage.

### Disclosures of Significant Relationships with Relevant Commercial Companies/Organizations by the Editorial Staff

Ernest E. Moore, Editor: PI, research support and shared U.S. patents Haemonetics; PI, research support, Instrumentation Laboratory, Inc.; Co-founder, Thrombo Therapeutics. Associate Editors David Hoyt, Ronald V. Maier and Steven Shackford have nothing to disclose. Editorial staff and Angela Sauaia have nothing to disclose.

### Author Disclosures

The authors have nothing to disclose

### Reviewer Disclosures

The reviewers have nothing to disclose.

### Cost

For AAST members and *Journal of Trauma and Acute Care Surgery* subscribers there is no charge to participate in this activity. For those who are not a member or subscriber, the cost for each credit is \$25.

<b>BACKGROUND:</b>	Historically, hemorrhage has been attributed as the leading cause (40%) of early death. However, a rigorous, real-time classification of the cause of death (COD) has not been performed. This study sought to prospectively adjudicate and classify COD to determine the epidemiology of trauma mortality.
<b>METHODS:</b>	Eighteen trauma centers prospectively enrolled all adult trauma patients at the time of death during December 2015 to August 2017. Immediately following death, attending providers adjudicated the primary and contributing secondary COD using standardized definitions. Data were confirmed by autopsies, if performed.
<b>RESULTS:</b>	One thousand five hundred thirty-six patients were enrolled with a median age of 55 years (interquartile range, 32–75 years), 74.5% were male. Penetrating mechanism ( $n = 412$ ) patients were younger (32 vs. 64, $p < 0.0001$ ) and more likely to be male (86.7% vs. 69.9%, $p < 0.0001$ ). Falls were the most common mechanism of injury (26.6%), with gunshot wounds second (24.3%). The most common overall primary COD was traumatic brain injury (TBI) (45%), followed by exsanguination (23%). Traumatic brain injury was nonsurvivable in 82.2% of cases. Blunt patients were more likely to have TBI (47.8% vs. 37.4%, $p < 0.0001$ ) and penetrating patients exsanguination (51.7% vs. 12.5%, $p < 0.0001$ ) as the primary COD. Exsanguination was the predominant prehospital (44.7%) and early COD (39.1%) with TBI as the most common later. Penetrating mechanism patients died earlier with 80.1% on day 0 (vs. 38.5%, $p < 0.0001$ ). Most deaths were deemed disease-related (69.3%), rather than by limitation of further aggressive care (30.7%). Hemorrhage was a contributing cause to 38.8% of deaths that occurred due to withdrawal of care.
<b>CONCLUSION:</b>	Exsanguination remains the predominant early primary COD with TBI accounting for most deaths at later time points. Timing and primary COD vary significantly by mechanism. Contemporaneous adjudication of COD is essential to elucidate the true understanding of patient outcome, center performance, and future research. ( <i>J Trauma Acute Care Surg.</i> 2019;86: 864–870. Copyright © 2019 Wolters Kluwer Health, Inc. All rights reserved.)
<b>LEVEL OF EVIDENCE:</b>	Epidemiologic, level II.
<b>KEY WORDS:</b>	Hemorrhage; cause of death; exsanguination.

Trauma is the leading cause of death (COD) for trauma patients aged 1 years to 44 years and is expected to rise to the leading COD in older age groups as the baby boomers reach

Submitted: February 15, 2018, Revised: September 8, 2018, Accepted: October 25, 2018, January 10, 2019.

From the Department of Surgery (R.A.C., L.Z.K., A.S.C., A.J.R.), Zuckerberg San Francisco General Hospital, University of California San Francisco, San Francisco, California; Department of Surgery (J.P.M., N.N.), University of Miami Miller School of Medicine, Jackson Memorial Hospital, Miami, Florida; Department of Surgery (D.E.M., A.H.), McGovern Medical School, University of Texas Health Science Center, Houston; Division of Trauma and Acute Care (M.S.T., V.A.), Methodist Dallas Medical Center, Dallas, Texas; Department of Trauma (J.M.H., K.L.L.), Via Christi Health, Kansas University School of Medicine Wichita Campus, Wichita, Kansas; Division of Trauma (J.M.P., J.L.S.R.), Cooper University Hospital, Camden, New Jersey; Department of Surgery (W.L.B.), Scripps Memorial Hospital La Jolla, La Jolla, California; Department of Surgery (M.S.H.), The Queen's Medical Center, The University of Hawaii, Honolulu, Hawaii; Trauma Service (M.J.S., J.B.), Scripps Mercy Hospital, San Diego; Division of Surgical Critical Care and Trauma (G.R., K.I.), Los Angeles County + University of Southern California Medical Center, Los Angeles, California; Department of Surgery (T.J.S., E.C.), University of Colorado Health, Memorial Hospital, Colorado Springs; Department of Surgery (J.A.D., S.G.), University of Colorado Health North, Medical Center of the Rockies, Loveland, Colorado; Department of Surgery (R.C.M. Jr., E.D.P.), University of Colorado School of Medicine, Aurora, Colorado; Department of Trauma and General Surgery (P.J.O., C.F.D.), Abruzzo Medical Group, Abruzzo West Campus, Goodyear, Arizona; Department of Surgery (A.M.S., E.E.S.), University of Oklahoma, Oklahoma City, Oklahoma; Division of Trauma and Emergency Acute Care Surgery (M.A.W., S.S.), North Memorial Health Hospital, Robbinsdale, Minnesota; Department of Surgery (D.C.C., J.F.C.), Marshfield Clinic, Marshfield, Wisconsin; Department of Surgery (E.E.M., H.B.M.), Denver Health Medical Center, University of Colorado Denver, Denver, Colorado; Department of Surgery (A.R.P., E.A.E.), Medical University of South Carolina, Charleston, South Carolina; Department of Surgery (M.J.C.), Denver Health Medical Center, Denver; and University of Colorado Medical Center (M.J.C.), Aurora, Colorado.

Meetings: 8th Annual Meeting of Western Trauma Association, March 2, 2018, Whistler, British Columbia, Canada.

Address for reprints: Rachael A Callcut, MD, Department of Surgery, Ward 3A, Zuckerberg San Francisco General Hospital, 1001 Potrero Avenue, San Francisco, CA 94110; email: Rachael.Callcut@ucsf.edu.

Supplemental digital content is available for this article. Direct URL citations appear in the printed text, and links to the digital files are provided in the HTML text of this article on the journal's Web site ([www.jtrauma.com](http://www.jtrauma.com)).

DOI: 10.1097/TA.0000000000002205

© 2019 Wolters Kluwer Health, Inc. All rights reserved.

advanced age.<sup>1</sup> The trimodal distribution of trauma death was described initially by Trunkey in 1983 using epidemiologic data from the 1970s.<sup>2</sup> Immediate deaths were those occurring in the prehospital environment, early deaths up to 4 hours postevent, and late death days to weeks later. Immediate deaths were not felt to be preventable but early and late deaths were potentially preventable. Since that time, there have been significant changes to trauma care systems, including prehospital advances, resuscitation practice changes, and improvement in critical care.<sup>3–8</sup>

The most impactful of the improvements is the recognition of the role of acute traumatic coagulopathy in poor outcome<sup>4,9</sup> and adoption of transfusion practices that favor more balanced resuscitation strategies designed to mitigate the effects of acute traumatic coagulopathy. Hemorrhage-related mortality is often attributed as the primary cause of preventable death comprising approximately 35% to 40% of all deaths and traumatic brain injury (TBI) the most common cause of overall death.<sup>10</sup> For decades, these estimates have gone largely unchallenged despite the evolution of treatment advances in trauma care.

Although there have been a number of retrospective studies over the last 35 years since Trunkey's original trimodal distribution study disputing the pattern of death,<sup>7,11,12</sup> there have been virtually no investigations in the last decade. Also, previous studies have lacked rigorous real-time classification of the COD and have relied on registry-based data or chart reviews to determine primary COD. This study sought to prospectively adjudicate COD following traumatic injury to determine if there has been a change in distribution of death with advances in trauma care.

## METHODS

The study was approved by the Western Trauma Association Multicenter Trials Group and each enrolling trauma center's Internal Review Board. Eighteen centers prospectively enrolled all adult trauma patients at the time of death from December 1, 2015, to August 15, 2017. Deaths from drowning, hanging, burns,

lightning strikes, and dog attacks were excluded from analysis. Basic demographic data (sex, age) and injury data (mechanism) were collected. All participating centers provided routine trauma care including adherence to Advanced Trauma Life Support principals and availability of massive transfusion protocols.

Prehospital arrest and need for resuscitative thoracotomy in the emergency department was recorded. The timing of death was determined with the date of arrival to the emergency department (ED) being considered day 0. Blood product consumption in the first 24 hours of care was provided. The location of death (ED, operating room, intensive care unit, interventional radiology, or ward) and circumstances of death were assessed including presence of a do not resuscitate order, comfort care/withdrawal of care, preexisting Physician Orders for Life-Sustaining Treatment (POLST), and family presence for decision making. Each death was also classified by the attending providers as disease-related or secondary to withdrawal care.

Attending providers at the enrolling center adjudicated the primary and contributing secondary COD using standardized definitions immediately following death (Table 1, Supplemental Digital Content, <http://links.lww.com/TA/B289>). Each patient death was attributed to a single primary COD. The COD categories were adapted from prior work by Cripps et al.<sup>13</sup> and classified as exsanguination, early physiologic collapse (within 24 hours), late physiologic collapse (after 24 hours), TBI, sudden unexpected event, or due to a medical event that immediately preceded the trauma. Traumatic brain injury was further classified into imminently nonsurvivable or potentially survivable. Data were confirmed by autopsies for those who were Coroner's cases,

and at either Morbidity and Mortality conferences or Trauma Peer Review if no autopsy was available.

In addition to the primary COD, patients could have one or more secondary contributing CODs. These were defined as hemorrhagic shock, obstructive shock, airway-related, TBI, respiratory failure, pulmonary embolism (PE), sepsis, multiple organ failure (MOF), stroke, preexisting medical disease, delayed/missed diagnosis, procedural complication, cardiopulmonary collapse (trauma-related or nontrauma-related), or other.

Data were grouped by mechanism of injury (blunt, penetrating) and timing of death (prehospital/ED, first 24 hours, and after 24 hours) for comparisons. Continuous variables were reported as medians with interquartile ranges (IQR) and compared with Wilcoxon Rank Sum. Categorical variables were compared with  $\chi^2$  and *t* tests. Kaplan Meier curves were created based on the day of death. Statistical significance was determined at *p* less than 0.05 level.

## RESULTS

Across the 18 centers, 1,536 patients were prospectively enrolled with a median day of death of 1 (0–4). The cohort median age was 55 years (IQR, 32–75 years), and the majority (74.5%) were male [Table 1]. Blunt injury was present in 73.2% of the cohort. Penetrating mechanism (*n* = 412) patients were younger (32 vs. 64, *p* < 0.0001) and more likely male (86.7% vs. 69.9%, *p* < 0.0001). Overall, falls were the most common mechanism (26.6%, *n* = 409) with gunshot wounds (GSWs) second (23.3%, *n* = 358), and motor vehicle collisions (16.8%, *n* = 258) next. Of the 358 patients suffering GSWs, 68.7% (*n* = 246) sustained

**TABLE 1.** Demographics

	Penetrating, <i>n</i> = 412	Blunt, <i>n</i> = 1124	Overall, <i>N</i> = 1536	<i>p</i>
Age: median (IQR), y	32 (25–43)	64 (43–80)	55 (32–75)	< 0.0001
Male	86.7%	69.9%	74.5%	< 0.0001
Mechanism				
MVC		258	16.8%	
MCC		105	6.8%	
Fall		409	26.6%	
Assault (blunt)		20	1.3%	
Crush		14	0.91%	
Ped vs. Auto		162	10.6%	
Bike vs. Auto		17	1.1%	
Found down		98	6.4%	
Other blunt		41	2.7%	
SW		33	2.2%	
Multiple SW		20	1.3%	
GSW		246	16.0%	
Multiple GSW		112	7.3%	
TBI	154 (37.4%)	532 (47.3%)	686 (61.0%)	
Median day of death	0 (0–0)	1 (0–6)	1 (0–4)	< 0.0001
Prehospital arrest ( <i>n</i> = 411 pen, 1,119 b)	247 (60.1%)	299 (26.7%)	546 (35.7%)	< 0.0001
ED thoracotomy ( <i>n</i> = 412 pen, 1,123 b)	142 (34.5%)	84 (7.5%)	226 (14.7%)	< 0.0001
Death attributed to:				
Disease-related	380 (92.2%)	684 (60.8%)	1,064 (69.3%)	< 0.0001
Withdrawal of care	32 (7.8%)	440 (39.1%)	472 (30.7%)	< 0.0001

MVC, motor vehicle collision; MCC, motorcycle collision; Ped, pedestrian; Auto, automobile; SW, stab wound; pen, penetrating; b, blunt.

an isolated GSW and 31.3% ( $n = 112$ ) multiple GSWs. Traumatic brain injury was present in 61.0% (686 of 1,536) of the overall cohort and was present in 47.3% (532 of 1,124) of the blunt injured patients [Table 1].

## Primary Cause and Timing of Death

Traumatic brain injury was the most common overall primary COD (45%, 691 TBI deaths of 1,536 total deaths) with it being more common in blunt patients (47.8% vs. 37.4%,  $p < 0.0001$ ). Most TBIs were nonsurvivable based on physician adjudication of the initial anatomic severity (82.2%). TBI resulting from penetrating trauma was significantly more likely to be nonsurvivable based on anatomic severity (98.1%, 151 of 154) compared with TBI from blunt injury (77.6%, 413 of 532;  $p < 0.0001$ ). The TBI deaths occurred later than those from other causes [Fig. 1].

The next most common primary COD was exsanguination (23%) (Table 2). Exsanguination was more frequent in penetrating patients than blunt patients (51.7% vs. 12.5%,  $p < 0.0001$ ). When considering the timing of death, exsanguination was the predominant prehospital (44.7%) and early COD (39.1%) [Fig. 1]. Of those dying early (prehospital/ED) from exsanguination ( $n = 205$ ), nearly all (96%) died of truncal hemorrhage, including 141 patients with penetrating truncal injury and 56 blunt truncal injury. An additional seven patients died of isolated stab wounds to the neck, and six patients suffered extensive extremity injuries resulting in hemorrhage. Only one of these six patients arrived with a tourniquet in place.

Prehospital arrest occurred in 35.7% (546 of 1,536) and was most common in penetrating patients ( $n = 247$ ,  $p < 0.0001$ ). Overall, 14.7% (226 of 1,536) underwent an emergency room resuscitative thoracotomy. Resuscitative endovascular balloon occlusion of the aorta (REBOA) was attempted in 1.6% (25 of 1,536 patients) with 22 of them being performed in the ED and three were placed in the operating room. Of the attempted REBOAs, three were not able to be placed/deployed due to anatomic or technical reasons. Of the successfully deployed REBOAs in the ED, 78.9% (15 of 19) left the ED alive and later succumb to their injuries.

Although one third of deaths occurred in the ED, most deaths occurred in the intensive care unit (46.6%). Only 12.9% of patients died in the operating room. Less than 2% of patients

were in a hospice unit at the time of their death (Table 3). Penetrating mechanism patients died earlier (80.1% on day 0 vs. 38.5%,  $p < 0.0001$ ) (Fig. 2) and were more likely to die in the ED than blunt patients ( $p < 0.0001$ , Table 3). Late physiologic collapse occurred in 15.6% of the cohort and was present more often in the blunt patients ( $p < 0.001$ ). Most deaths following late physiologic collapse were attributed to limitation of further care (62.7%, 151 of 241).

## Secondary COD

The most common secondary contributing causes of death were respiratory failure (13.7%), preexisting conditions (9.2%), hemorrhagic shock (6.8%), and MOF (6.1%) (Table 4). Respiratory failure and preexisting conditions were more common in blunt patients (both  $p < 0.0001$ , Table 4). There was no difference in hemorrhagic shock, obstructive shock, PE, sepsis, or procedural complications between blunt and penetrating mechanisms. Hemorrhage was a contributing cause to 38.8% of deaths that occurred due to withdrawal of care.

## Blood Product Usage

Blood products were used in 33.5% ( $n = 515$ ) of the cohort. Among the 412 trauma patients suffering from penetrating mechanisms, 35% (145 of 412) received at least 1 unit of packed red blood cell (PRBCs) and 17.5% (72 of 412) received massive transfusion (10 or more units of PRBCs in 24 hours). In blunt mechanism patients, 32.9% (370 of 1,124) received at least 1 unit of PRBC and 11.7% received massive transfusion. The range of PRBCs received was 1 to 133 units in penetrating mechanisms and 1 to 86 units in blunt mechanisms (Table 2, Supplemental Digital Content, <http://links.lww.com/TA/B289>). Plasma received ranged from 1 to 165 units (penetrating 1–165, blunt 1–84 units). Massive transfusion was more common in penetrating injury ( $p = 0.003$ ). For those receiving any blood products, the median ratio of PRBC/plasma was 1.21 (1.0–2.0) and was lower in the blunt patients (1.16 vs. 1.44;  $p = 0.0003$ ).

## Role of Advanced Directives and Palliative Care

Most deaths were deemed disease-related (69.3%), rather than from limitation of further care (30.7%). Preexisting advanced directives or POLST forms were available in 135 (8.9%) patients and family available to participate in goal of care discussions in

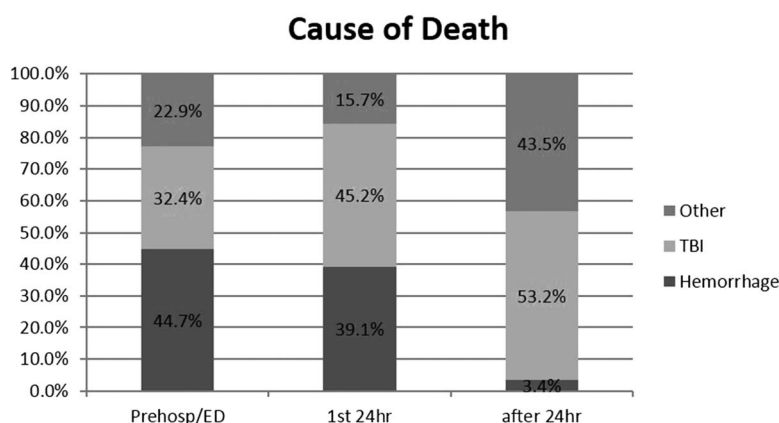


Figure 1. COD by Time. prehosp, prehospital.

**TABLE 2.** Primary COD

	Penetrating	Blunt	Total	<i>p</i>
TBI	154 (37.4%)	537 (47.8%)	691 (45.0%)	0.0003
Exsanguination	213 (51.7%)	140 (12.5%)	353 (23.0%)	< 0.0001
Early physiologic collapse	24 (5.8%)	125 (11.1%)	149 (9.7%)	0.0019
Late physiologic collapse	17 (4.1%)	222 (19.8%)	239 (15.6%)	< 0.0001
Airway	3 (0.73%)	20 (1.8%)	23 (1.5%)	0.1329
Sudden unexpected event	1 (0.24%)	14 (1.3%)	15 (0.98%)	0.076
Pretrauma medical event	0 (0%)	59 (5.2%)	59 (3.8%)	< 0.0001
Other	0 (0%)	7 (0.62%)	7 (0.49%)	0.1084
Total	412 (26.8%)	1,124 (73.2%)	1,536 (100%)	< 0.0001

60.0% (Table 3, Supplemental Digital Content, <http://links.lww.com/TA/B289>). Half (50.9%) of the blunt mechanism patients had a DNR order in place at the time of their death compared with only 13.4% of the penetrating patients ( $p < 0.0001$ ). For patients dying following hospital admission (not in the ED), most (62.5%) were transitioned to comfort care including 69.9% of the blunt patients (Table 3, Supplemental Digital Content, <http://links.lww.com/TA/B289>). Penetrating trauma patients were less likely to have comfort care orders at the time of death (25.7%) and were less likely (32.2%) to have family available for goal of care discussions (both  $p < 0.0001$ ).

## DISCUSSION

For decades, the greatest burden of the loss of years of productive life have been attributed to traumatic injury for those aged 1 years to 44 years.<sup>1</sup> Strategies designed to mitigate the risk of death including prehospital, critical care, and resuscitation advances have been adopted. Although the field has had a general understanding of the timing of and causes of posttraumatic mortality, this current study represents a multicenter *prospective* investigation specifically designed to understand the how and why trauma patients succumb to injury using real-time COD adjudication.

Classic descriptions that are common in our literature suggest that approximately 35% to 40% of our patients die directly as a result of hemorrhagic causes and it has been argued that these represent the portion of poor outcomes that may be modifiable.<sup>10</sup> To date, few investigations have distilled apart the important components of mitigatable mortality risk. Indeed, in all of these studies, a patient dying from anatomically

nonsurvivable exsanguination would be lumped together with a patient who bled to death as a result of suboptimal trauma care, and/or inadequate (but otherwise survivable) resuscitation.<sup>14</sup> In contrast to this older population level data, in the current study, less than a quarter of the overall cohort died of exsanguination. However, mechanism of injury was an important distinguishing feature for primary COD. Only 12.5% of blunt patients died of exsanguination compared with over half of the penetrating patients dying of hemorrhage.

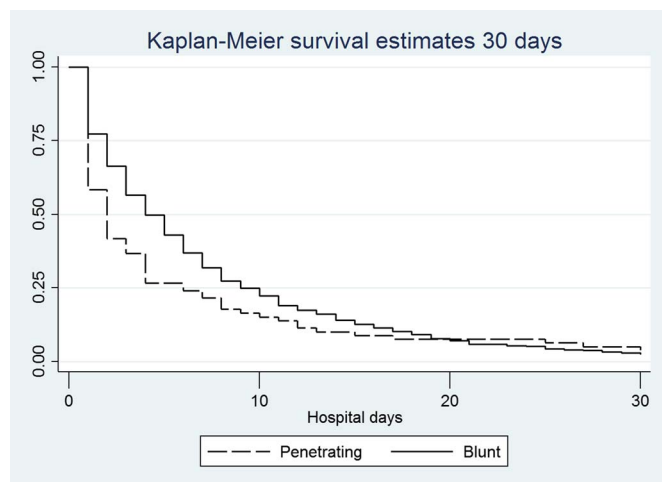
One of the most important findings in this study is the factor of time of death. Most of the patients did not die in the emergency room and surprisingly, almost a third of patients died after limitation of further care. These are patients who had anatomically survivable injuries. This is the patient group that we think may benefit from the ongoing work in trying to define better prehospital and very early interventions that may mitigate the outcome trajectory. Oyeniyi et al.<sup>15</sup> recently found that in their center with efforts focused on hemorrhage control strategies, mortality fell. The rate dropped from a historic rate in their institution of 36% to 25% which was temporally related to the introduction of a bleeding control bundle. Early blood product usage even in the prehospital environment has also shown promise for further reduction in mortality.<sup>6</sup> Others have reported that even a delay as short as 10 minutes to PRBC transfusion increased the risk of death in hemorrhaging patients.<sup>16</sup> This further illustrates that investigating strategies such as prehospital blood product administration and hemorrhage control techniques like REBOA aimed at very early intervention for those suffering exsanguination may play an important role in decreasing deaths from potentially preventable causes.

Although it could be argued that our data shows that perhaps there is less opportunity to intervene in exsanguination

**TABLE 3.** Death Location by Mechanism

	Penetrating, n = 411	Blunt, n = 1120	Total, N = 1,531	<i>p</i>
ED	240 (58.4%)	275 (24.6%)	515 (33.6%)	< 0.001
OR	57 (13.9%)	87 (7.8%)	144 (12.9%)	0.003
ICU	112 (27.2%)	601 (53.7%)	713 (46.6%)	< 0.001
IR	0 (0%)	3 (0.27%)	3 (0.20%)	0.294
General ward	2 (0.48%)	121 (10.8%)	123 (11.0%)	< 0.001
Hospice unit	0 (0%)	31 (2.8%)	31 (2.0%)	0.007
Other	0 (0%)	2 (0.18%)	2 (0.13%)	0.391

OR, operating room; ICU, intensive care unit; IR, interventional radiology.



**Figure 2.** Kaplan Meier survival estimates by mechanism.

deaths, the vast majority of patients in this study died following admission to the inpatient unit, not in the ED/prehospital time period or in the operating room. Specifically, those who suffered blunt injury survived longer than the penetrating patients and interestingly, perhaps due to survival bias (lived longer), they received a more balanced ratio of PRBCs to plasma. Together these data support the hypothesis that better trauma care and resuscitation early, not only prevents early deaths but also establishes a trajectory that mitigates later death and improves overall long term survival.

Recent investigations of trauma resuscitation including the Pragmatic Randomized Optimal Platelet and Plasma Ratio (PROPPR) trial have found that those who die of hemorrhage, die early.<sup>3-5</sup> Our study confirms these findings with exsanguination being the predominant cause of early deaths (prehospital/ED 44.7%; first 24 hours of hospitalization 39.1%). In addition, even when hemorrhage was not the primary COD, it was a factor in 38.8% of deaths that occurred following a decision to limit further aggressive care. The vast majority of these had concomitant TBI and over 80% of all TBIs were deemed nonsurvivable. A portion of the hemorrhage-related deaths without question reflect anatomically nonsurvivable injuries especially for those dying in the prehospital/ED period, however, there does exist a

narrow but important window to potentially impact outcome with further refinement of care.<sup>17,18</sup>

Although hemorrhage and TBI played important roles as the primary COD, there was a remarkable percentage (15.6%) of those suffering late physiologic collapse. Proinflammatory and infectious causes were the predominant etiologies of secondary COD including respiratory failure (13.7%), MOF (6.8%), and sepsis (4.2%). The combination of these factors most likely reflects a group of patients that survived their initial insult, but succumb to the late effects of critical injury. This is an important group of patients in which elements of mitigatable risk and failure to rescue play pivotal roles and should be the subject of further investigation.

Unique to our study, we collected goals of care data on patients to more fully understand the end of life events. Overall, less than a third of patient deaths were predominantly due to limitation of further care. There were significant and important differences by mechanism with almost all penetrating deaths secondary to disease. In contrast, nearly 40% of blunt patient deaths were due to withdrawal of care. Our data underscores the necessity of collecting the underlying etiology of death if mortality is to be used as a performance metric. Using retrospective data, Weireter et al.<sup>19</sup> found similar findings in a single-center study where those who had care withdrawn created a 23% increase in their overall mortality data.

Importantly, most (62.5%) of the cohort who survived to hospital admission were transitioned to comfort care prior to their deaths. Although more blunt mechanism patients had family available for discussion of goals of care and were more likely to have a DNR in place at the time of death, this likely reflects the longer length of time the blunt patients survived. Despite nearly 50% of the blunt patients having a DNR order at the time of their death, less than 2% of patients died in a hospice unit and most died in the intensive care unit. This held true even for the blunt patients who were more likely to have care withdrawn, rather than die rapidly from disease. This study highlights that there is remaining uncaptured opportunities to maximize palliative care service and goals of care discussions for those highly likely to succumb to their injuries. Our ability to interpret the details of who was offered palliative care services is limited by lack of socioeconomic factors collected in the study.

**TABLE 4.** Secondary Causes Contributing to Death by Mechanism

	Penetrating, n = 412	Blunt, n = 1124	Total, N = 1,536	p
Shock, hemorrhagic	25 (6.1%)	79 (7.0%)	104 (6.8%)	0.510
Shock, obstructive	2 (0.4%)	2 (0.1%)	4 (0.2%)	0.300
TBI	4 (0.97%)	84 (7.5%)	88 (5.7%)	< 0.0001
Airway	5 (1.2%)	34 (3.0%)	39 (2.5%)	0.046
Respiratory failure	16 (3.9%)	195 (17.3%)	211 (13.7%)	< 0.0001
PE	2 (0.4%)	9 (0.8%)	11 (0.7%)	0.52
Sepsis	11 (2.7%)	53 (4.7%)	64 (4.2%)	0.076
Stroke	1 (0.2%)	27 (2.4%)	28 (1.8%)	0.005
MOF	9 (2.2%)	84 (7.5%)	93 (6.1%)	< 0.0001
Preexisting condition	5 (1.2%)	137 (12.2%)	142 (9.2%)	< 0.0001
Procedural complication	1 (0.2%)	5 (0.4%)	6 (0.3%)	0.574
Other	0 (0%)	22 (2.0%)	22 (1.4%)	0.004

There are a number of other potential limitations to this study. First, there was no standard protocol or treatment algorithm for patients leading to potential for wide spectrum of care across institutions that may have affected the COD. However, the participating centers all follow standard Advanced Trauma Life Support protocols for the initial care/stabilization of the patients, have massive transfusion protocols, and are accredited trauma centers. These criterion serve to help decrease the level of treatment bias that can exist. In addition, prehospital cardiac arrests that were transported to the participating centers were also included to reduce the bias of classification of ‘dead on arrival’ patients. Further, although the vast majority of the cases were coroners cases (72.8%, n = 1113/1536), a consensus approach for COD was the best available method to determine primary COD in those lacking an autopsy. This approach was performed to limit bias in the interpretation of COD from a single attending provider by instead utilizing consensus among peers through the participating institution trauma peer review process as to the circumstances of the COD. In addition, there are no standard accepted definitions of COD. To standardize our categories, categories of COD were based on those from prior literature.<sup>13</sup>

## CONCLUSION

Exsanguination remains the predominant early primary COD with TBI accounting for most deaths at later time points. Timing and primary COD vary significantly by mechanism. Contemporaneous adjudication of COD is essential to elucidate the true understanding of patient outcome, center performance, and future research.

## AUTHORSHIP

Study design, data collection, data analysis, data interpretation, and writing were performed by R.A.C. and M.J.C. Study design, data collection, interpretation, and critical review were performed by L.Z.K., A.S.C., A.J.R. Data collection, interpretation, and critical review were performed by J.P.M., N.N., D.E.M., A.H., M.S.T., V.A., J.M.H., K.L.L., J.M.P., J.L.S.R., W.L.B., M.S.H., M.J.S., J.B., G.R., K.I., T.J.S., E.C., J.A.D., S.G., R.C.M., E.D.P., P.J.O’N., C.F.D., A.M.S., E.E.S., M.A.W., S.S., D.C.C., J.F.C., E.E.M., H.B.M., A.R.P., E.A.E.

## DISCLOSURE

The WTA Multicenter Study group includes Ronald J Manning, Tim Gutierrez, Paul Deramo, Casey E Dunne, Monica D Wong, Regina V Krell, Alisa M Cross, Cressilee Butler, Cindy Moore, Richelle Rumford. The authors declare no conflicts of interest.

## FUNDING

Dr. Callcut is supported by NIH K01E026834.

## REFERENCES

- Rhee P, Joseph B, Pandit V, Aziz H, Vercruysee G, Kulvatunyou N, Friese RS. Increasing trauma deaths in the United States. *Ann Surg*. 2014; 60(1):13–21.
- Trunkey DD, Blaisdell FW. Epidemiology of trauma. *Sci Am*. 1988;4(1).
- Holcomb JB, Tilley BC, Baraniuk S, Fox EE, Wade CE, Podbielski JM, del Junco DJ, Brasel KJ, Bulger EM, Callcut RA, et al. Transfusion of plasma, platelets, and red blood cells in a 1:1:1 vs a 1:1:2 ratio and mortality in patients with severe trauma: the PROPPR randomized clinical trial. *JAMA*. 2015;313(5):471–482.
- Nardi G, Agostini V, Rondinelli B, Russo E, Bastianini B, Bini G, Bulgarelli S, Cingolani E, Donato A, Gambale G, et al. Trauma-induced coagulopathy: impact of the early coagulation support protocol on blood product consumption, mortality, and costs. *Crit Care*. 2015;19:83.
- Fox EE, Holcomb JB, Wade CE, Bulger EM, Tilley BC, PROPPR Study Group. Earlier endpoints are required for hemorrhagic shock trials among severely injured patients. *Shock*. 2017;47(5):567–573.
- Brown JB, Sperry JL, Fombona A, Billiar TR, Peitzman AB, Guyette FX. Pre-trauma center red blood cell transfusion is associated with improved early outcomes in air medical trauma patients. *J Am Coll Surg*. 2015; 220(5):797–808.
- Demetriades D, Kimbrell B, Salim A, Velmahos G, Rhee P, Preston C, Gruzinski G, Chan L. Trauma deaths in a mature urban trauma system: is “trimodal” distribution a valid concept? *J Am Coll Surg*. 2005;201(3): 343–348.
- Pang JM, Civil I, Ng A, Adams D, Koelmeyer T. Is the trimodal pattern of death after trauma a dated concept in the 21st century? Trauma deaths in Auckland 2004. *Injury*. 2008;39:102–106.
- Cohen MJ, Call M, Nelson M, Calfee CS, Esmon CT, Brohi K, Pittet JF. Critical role of activated protein C in early coagulopathy and later organ failure, infection and death in trauma patients. *Ann Surg*. 2012;255(2):379–385.
- Pfeifer R, Tarkin IS, Rocos B, Pape H. Patterns of mortality and causes of death in polytrauma patients—has anything changed? *Injury*. 2009;40: 907–911.
- Demetriades D, Murray J, Charalambides K, Alo K, Velmahos G, Rhee P, Chan L. Trauma fatalities: time and location of hospital deaths. *J Am Coll Surg*. 2004;198(1):20–26.
- Sauaia A, Moore FA, Moore EE, Moser KS, Brennan R, Read RA, Pons PT. Epidemiology of trauma deaths: a reassessment. *J Trauma*. 1995;38(2): 185–193.
- Cripps MW, Kutcher ME, Daley A, McCreery RC, Greenberg MD, Cachola LM, Redick BJ, Nelson MF, Cohen MJ. Cause and timing of death in massively transfused trauma patients. *J Trauma Acute Care Surg*. 2013; 75(2 Suppl 2):S255–S262.
- Valdez C, Sarani B, Young H, Amdur R, Dunne J, Chawla LS. Timing of death after traumatic injury—a contemporary assessment of the temporal distribution of death. *J Surg Res*. 2016;200:604–609.
- Oyeniya BT, Fox EE, Scerbo M, Tomasek JS, Wade CE, Holcomb JB. Trends in 1029 trauma deaths at a level 1 trauma center: impact of a bleeding control bundle of care. *Injury*. 2017;48(1):5–12.
- Powell EK, Hinckley WR, Gottula A, Hart KW, Lindsell CJ, McMullan JT. Shorter times to packed red blood cell transfusion are associated with decreased risk of death in traumatically injured patients. *J Trauma Acute Care Surg*. 2016;81(3):458–462.
- Oliver GJ, Walter DP, Redmond AD. Prehospital deaths from trauma: are injuries survivable and do bystanders help? *Injury*. 2017;48(5):985–991.
- Davis JS, Satahoo SS, Butler FK, Dermer H, Naranjo D, Julien K, Van Haren RM, Namias N, Blackburne LH, Schulman CI. An analysis of prehospital deaths: who can we save? *J Trauma Acute Care Surg*. 2014; 77(2):213–218.
- Weireter LJ Jr., Collins JN, Britt RC, Novosel TJ, Britt LD. Withdrawal of care in a trauma intensive care unit: the impact on mortality rate. *Am Surg*. 2014;80(8):764–767.