

Outcomes after ultramassive transfusion in the modern era: An Eastern Association for the Surgery of Trauma multicenter study

Zachary A. Matthay, MD, Zane J. Hellmann, MD, Rachael A. Callcut, MD, MSPH, Ellicott C. Matthay, PhD, Brenda Nunez-Garcia, BA, William Duong, MD, Jeffry Nahmias, MD, MHPE, Aimee K. LaRiccio, DO, M. Chance Spalding, DO, PhD, Satya S. Dalavayi, MD, Jessica K. Reynolds, MD, Heather Lesch, MD,

CONTINUING MEDICAL EDUCATION CREDIT INFORMATION

Accreditation

This activity has been planned and implemented in accordance with the Essential Areas and Policies of the Accreditation Council for Continuing Medical Education (ACCME) through the joint providership of the American College of Surgeons and American Association for the Surgery of Trauma. The American College of Surgeons is accredited by the ACCME to provide continuing medical education for physicians.

AMA PRA Category 1 Credits™

The American College of Surgeons designates this journal-based activity for a maximum of 1.00 AMA PRA Category 1 Credit™. Physicians should claim only the credit commensurate with the extent of their participation in the activity. Of the AMA PRA Category 1 Credit™ listed above, a maximum of 1.00 credit meets the requirements for self-assessment.



AMERICAN COLLEGE OF SURGEONS
Inspiring Quality.
Highest Standards. Better Outcomes



AMERICAN COLLEGE OF SURGEONS
DIVISION OF EDUCATION

Objectives

After reading the featured articles published in the *Journal of Trauma and Acute Care Surgery*, participants should be able to demonstrate increased understanding of the material specific to the article. Objectives for each article are featured at the beginning of each article and online. Test questions are at the end of the article, with a critique and specific location in the article referencing the question topic.

Disclosure Information

In accordance with the ACCME Accreditation Criteria, the American College of Surgeons must ensure that anyone in a position to control the content of the educational activity (planners and speakers/authors/discussants/moderators) has disclosed all financial relationships with any commercial interest (termed by the ACCME as "ineligible companies", defined below) held in the last 24 months (see below for definitions). Please note that first authors were required to collect and submit disclosure information on behalf all other authors/contributors, if applicable.

Ineligible Company: The ACCME defines a "commercial interest" as any entity producing, marketing, re-selling, or distributing health care goods or services used on or consumed by patients. Providers of clinical services directly to patients are NOT included in this definition.

Financial Relationships: Relationships in which the individual benefits by receiving a salary, royalty, intellectual property rights, consulting fee, honoraria, ownership interest (e.g., stocks, stock options or other ownership interest, excluding diversified mutual funds), or other financial benefit. Financial benefits are usually associated with roles such as employment, management position, independent contractor (including contracted research), consulting, speaking and teaching, membership on advisory committees or review panels, board membership, and other activities from which remuneration is received, or expected. ACCME considers relationships of the person involved in the CME activity to include financial relationships of a spouse or partner.

Conflict of Interest: Circumstances create a conflict of interest when an individual has an opportunity to affect CME content about products or services of a commercial interest with which he/she has a financial relationship.

The ACCME also requires that ACS manage any reported conflict and eliminate the potential for bias during the session. Any conflicts noted below have been managed to our satisfaction. The disclosure information is intended to identify any commercial relationships and allow learners to form their own judgments. However, if you perceive a bias during the educational activity, please report it on the evaluation.

AUTHORS/CONTRIBUTORS				
Ellicott Matthay, GE Healthcare/Haemonetics, Grant, PI; Joshua Hazelton, Z-Medica, Consulting Fee, Consultant; Zachary A. Matthay, Zane J. Hellmann, Rachael A. Callcut, Brenda Nunez-Garcia, William Duong, Jeffry Nahmias, Aimee K. LaRiccio, M. Chance Spalding, Satya S. Dalavayi, Jessica K. Reynolds, Heather Lesch, Yee M. Wong, Amanda M. Chipman, Rosemary A. Kozar, Liz Penaloza, Kaushik Mukherjee, Khaled Taghlabi, Christopher A. Guidry, Sirivan S. Seng, Asanthi Ratnasakera, Amirreza Motameni, Pascal Udekwi, Kathleen Madden, Sarah A. Moore, Jordan Kirsch, Jesse Goddard, James Haan, Kelly Lightwine, Julianne B. Ontengco, Daniel C. Cullinane, Sarabeth A. Spitzer, John C. Kubasiak, Joshua Gish, Alexandria Z. Byskosh, Joseph A. Postlusny, Erin E. Ross, John J. Park, Brittany Robinson, Mary Kathryn Abel, Alexander T. Fields, Jonathan H. Esensten, Ashok Nambiar, Joanne Moore, Claire Hardman, Pranaya Terse, Xian Luo-Owen, Anquetette Stiles, Brenden Pearce, Kimberly Tann, Khaled Abdul Jawad, Gabriel Ruiz, and Lucy Z. Kornblith - No Disclosures.				
PLANNING COMMITTEE / EDITORIAL COMMITTEE	NOTHING TO DISCLOSE	DISCLOSURE		
		COMPANY	ROLE	RECEIVED
Ernest E. Moore, Editor		Haemonetics	PI	Shared U.S. Patents
		Instrumentation Laboratory	PI	Research Support
		Stago, Humacyte, Pyltime, Genentech	PI	Research Support
		ThromboTherapeutics	Co-founder	Stock
Associate Editors David B. Hoyt, Ronald V. Maier, and Steven Shackford	X			
Editorial Staff and Angela Sauaia	X			

Claiming Credit

To claim credit, please visit the AAST website at <http://www.aast.org/> and click on the "e-Learning/MOC" tab. You must read the article, successfully complete the post-test and evaluation. Your CME certificate will be available immediately upon receiving a passing score of 75% or higher on the post-test. Post-tests receiving a score of below 75% will require a retake of the test to receive credit.

Credits can only be claimed online

Cost

For AAST members and *Journal of Trauma and Acute Care Surgery* subscribers there is no charge to participate in this activity. For those who are not a member or subscriber, the cost for each credit is \$25.

Questions

If you have any questions, please contact AAST at 800-789-4006. Paper test and evaluations will not be accepted.

Yee M. Wong, MD, Amanda M. Chipman, MD, Rosemary A. Kozar, MD, PhD, Liz Penaloza, MD, Kaushik Mukherjee, MD, Khaled Taghlabi, MBBS, Christopher A. Guidry, MD, Sirivan S. Seng, MD, Asanthi Ratnasekera, DO, Amirreza Motameni, MD, Pascal Udekwu, MBBS, MHA, MBA, Kathleen Madden, MD, Sarah A. Moore, MD, Jordan Kirsch, DO, Jesse Goddard, MD, James Haan, MD, Kelly Lightwine, MPH, Julianne B. Ontengco, DNP, ANP-C, Daniel C. Cullinane, MD, Sarabeth A. Spitzer, MD, John C. Kubasiak, MD, Joshua Gish, MD, Joshua P. Hazelton, DO, Alexandria Z. Byskosh, BS, Joseph A. Posluszny, MD, Erin E. Ross, BS, John J. Park, BS, Brittany Robinson, MD, Mary Kathryn Abel, AB, Alexander T. Fields, PhD, Jonathan H. Esensten, MD, PhD, Ashok Nambiar, MD, Joanne Moore, MT, SBB, Claire Hardman, MPH, Pranaya Terse, BA, Xian Luo-Owen, PhD, Anquonette Stiles, DC, MPH, Brenden Pearce, BS, Kimberly Tann, BS, Khaled Abdul Jawad, MD, Gabriel Ruiz, MD, and Lucy Z. Kornblith, MD, San Francisco, California

BACKGROUND:	Despite the widespread institution of modern massive transfusion protocols with balanced blood product ratios, survival for patients with traumatic hemorrhage receiving ultramassive transfusion (UMT) (defined as ≥ 20 U of packed red blood cells [RBCs]) in 24 hours) remains low and resource consumption remains high. Therefore, we aimed to identify factors associated with mortality in trauma patients receiving UMT in the modern resuscitation era.
METHODS:	An Eastern Association for the Surgery of Trauma multicenter retrospective study of 461 trauma patients from 17 trauma centers who received ≥ 20 U of RBCs in 24 hours was performed (2014–2019). Multivariable logistic regression and Classification and Regression Tree analysis were used to identify clinical characteristics associated with mortality.
RESULTS:	The 461 patients were young (median age, 35 years), male (82%), severely injured (median Injury Severity Score, 33), in shock (median shock index, 1.2; base excess, -9), and transfused a median of 29 U of RBCs, 22 U of fresh frozen plasma (FFP), and 24 U of platelets (PLT). Mortality was 46% at 24 hours and 65% at discharge. Transfusion of RBC/FFP $\geq 1.5:1$ or RBC/PLT $\geq 1.5:1$ was significantly associated with mortality, most pronounced for the 18% of patients who received both RBC/PLT and RBC/FFP $\geq 1.5:1$ (odds ratios, 3.11 and 2.81 for mortality at 24 hours and discharge; both $p < 0.01$). Classification and Regression Tree identified that age older than 50 years, low initial Glasgow Coma Scale, thrombocytopenia, and resuscitative thoracotomy were associated with low likelihood of survival (14–26%), while absence of these factors was associated with the highest survival (71%).
CONCLUSION:	Despite modern massive transfusion protocols, one half of trauma patients receiving UMT are transfused with either RBC/FFP or RBC/PLT in unbalanced ratios $\geq 1.5:1$, with increased associated mortality. Maintaining focus on balanced ratios during UMT is critical, and consideration of advanced age, poor initial mental status, thrombocytopenia, and resuscitative thoracotomy can aid in prognostication. (<i>J Trauma Acute Care Surg.</i> 2021;91: 24–33. Copyright © 2021 Wolters Kluwer Health, Inc. All rights reserved.)
LEVEL OF EVIDENCE:	Prognostic, level III.
KEY WORDS:	Trauma; hemorrhagic shock; transfusion medicine.

Traumatic hemorrhage remains a leading cause of morbidity and mortality in injured patients.¹ The implementation of damage-control resuscitation practices with initial empiric balanced ratios of packed red blood cells (RBCs), fresh frozen plasma (FFP), and platelets (PLT) followed by goal-directed resuscitation in massive transfusion protocols (MTPs) has led to improved outcomes and been increasingly adopted in trauma patients.^{2–9} However, it is not known whether these advances in transfusion strategies are associated with improved outcomes specifically in trauma patients receiving ultramassive transfusion (UMT), defined as transfusion

of greater than 20 U of RBCs in 24 hours.^{10,11} This is highlighted by the finding that the majority of patients enrolled in the paradigm shifting Prospective, Observational, Multicenter, Major Trauma Transfusion (PROMMTT) and Pragmatic Randomized Optimal Platelet and Plasma Ratios (PROPPR) trials were transfused less than 10 U of RBCs in 24 hours.^{6,7}

Patients receiving UMT present unique decision-making challenges given their massive use of blood products and hospital resources in the setting of severe injuries, frequent physiologic deterioration requiring emergent, lifesaving interventions,

From the Department of Surgery at Zuckerberg San Francisco General Hospital, University of California San Francisco (Z.A.M., Z.J.H., R.A.C., B.N.-G., L.Z.K., E.E.R., J.J.P., B.R., M.K.A., A.T.F.), San Francisco, California; Department of Epidemiology and Biostatistics, University of California San Francisco (E.C.M.), San Francisco, California; Department of Laboratory Medicine, University of California, San Francisco (J.H.E., A.N., J.M.), San Francisco, California; Department of Surgery, University of California Irvine (W.D., J.N.), Irvine, Orange, California; Department of Surgery, Ohio Health Grant Medical Center (A.K.L., M.C.S.), Columbus, Ohio; Department of Surgery, University of Kentucky (S.S.D., J.K.R.), Lexington, Kentucky; Department of Surgery, Miami Valley Hospital (H.L., Y.W., C.H.), Dayton, Ohio; Department of Surgery, R Adams Cowley Shock Trauma Center (A.M.C., R.A.K., P.T.), University of Maryland School of Medicine, Baltimore, Maryland; Department of Surgery, Loma Linda Medical Center (L.P., K.M., X.L.-O.), Loma Linda, California; Department of Surgery, University of Kansas Medical Center (K.T., C.A.G.), Kansas City, Kansas; Department of Surgery, Crozer-Chester Medical Center (S.S.S., A.R.), Upland, Pennsylvania; Department of Surgery, WakeMed Health and Hospitals (A.M., P.U., A.S., B.P., K.T.), Raleigh, North Carolina; Department of Surgery, University of New Mexico School of Medicine (K.M., S.A.M.), Albuquerque, New Mexico; Department of Surgery, Wellspan York Hospital (J.G.), York, Pennsylvania; Department of Surgery, Ascension Via Christi Hospitals

St. Francis (J.K., J.H., K.L.), Wichita, Kansas; Department of Surgery, Maine Medical Center (J.B.O., D.C.C.), Portland, Maine; Department of Surgery, South Shore Hospital/Brigham and Women's Hospital (S.A.S., J.C.K.), Boston, Massachusetts; Department of Surgery, Penn State Hershey Medical Center (J.G., J.P.H.), Hershey, Pennsylvania; Department of Surgery, Northwestern University Feinberg School of Medicine (A.Z.B., J.A.P.), Chicago, Illinois; Department of Surgery, University of California (R.A.C.), UC Davis, Sacramento, California; Department of Surgery, Ryder Trauma Center (K.A.J., G.R.), University of Miami Miller School of Medicine, Miami, Florida; and Washington University School of Medicine St. Louis (J.K.), Missouri.

Published online date: February 20, 2021

This work was presented virtually at the 34th EAST Scientific Assembly, January 13, 2021. Supplemental digital content is available for this article. Direct URL citations appear in the printed text, and links to the digital files are provided in the HTML text of this article on the journal's Web site (www.jtrauma.com).

Address for reprints: Zachary A. Matthay, MD, Zuckerberg San Francisco General Hospital, University of California San Francisco, 1001 Potrero Ave, Bldg 1, Ste 210, Box 1302, San Francisco, CA 94110; email: zachary.matthay@ucsf.edu.

DOI: 10.1097/TA.000000000000121

and their very high mortality rates.^{10,12} Furthermore, UMT events have the potential to overwhelm trauma care systems in resource-limited settings including during mass casualty incidents, in austere environments, or even during large health crises such as the current coronavirus disease 2019 pandemic.^{10–13} Because of these issues, understanding the prognosis of patients receiving UMT may assist clinicians in resource allocation during shortages. Because of the rarity of UMT events, only a few studies have examined outcomes for trauma patients specifically meeting UMT criteria, reporting very high mortality rates ranging from 60% to 70%.^{10–12} These studies could not definitively establish physiologic parameters or transfusion thresholds beyond which survival was very unlikely, but they did identify that patients with higher injury severity, lower Glasgow Coma Scale (GCS) score, male sex, and undergoing resuscitative thoracotomy were more likely to die.^{10–12} Importantly though, none of these studies were performed since the widespread implementation of damage-control resuscitation practices, nor with a large cohort of trauma patients or representing practices across multiple injuries institutions.

Therefore, to further advance our understanding of the care of trauma patients who receive UMT for traumatic hemorrhage, we performed a large, multicenter, retrospective study of patients receiving UMT during the modern era of balanced blood product resuscitation (post-PROMMT, 2014–2019).⁷ We aimed to further characterize outcomes for trauma patients receiving UMT and to identify clinical, physiologic, and transfusion factors predictive of mortality, hypothesizing that balanced transfusion ratios would be associated with improved mortality based on landmark studies of transfusion in trauma.^{6,7}

PATIENTS AND METHODS

Study Design, Inclusion Criteria, and Participating Centers

Seventeen adult level 1 and 2 trauma centers participated in this Eastern Association for the Surgery of Trauma multicenter, retrospective study (see Supplementary Table 1, <http://links.lww.com/TA/B920>, for site accreditation level and MTP characteristics). The cohort included 461 adult trauma patients (≥ 18 years of age) who received ≥ 20 U of RBCs within 24 hours of presentation to the emergency department (2014–2019). We collected patient demographics, injury and physiologic characteristics on arrival, operative procedures performed, transfusions and hemostatic adjunct use within 24 hours, in-hospital complications, and mortality at 24 hours and during hospitalization. To standardize transfusion variables across sites for analysis, we defined 1 RBC unit as 300 mL, 1 FFP unit as 250 mL, and 1 PLT unit as 50 mL. Whole blood was reported to be available at three of the participating centers, but only two patients in the study received whole blood (2 U each). Power calculations revealed that a sample size of 450 patients would yield 80% power to detect a 15% difference in mortality between groups with balanced ($<1.5:1$) versus unbalanced ($\geq 1.5:1$) transfusion ratios, with α set at 0.05. The study was approved by the institutional review board at each of the participating centers.

Statistical Analyses

Patient demographics, characteristics, transfusions, and outcomes were described using means and SDs for normally distributed continuous variables and median and interquartile ranges for

skewed continuous variables, and as percentages for binary and categorical variables. Univariate analyses were performed to test for differences in demographics and clinical characteristics by mortality at discharge using Student's *t* tests for continuous and normally distributed variables, Wilcoxon rank sum tests for continuous and nonnormally distributed variables, and Fisher's exact tests for binary and categorical variables. A two-sided *p* value of <0.05 was considered statistically significant.

Multivariable logistic regression was used to test the association of three primary predictors (transfusion ratios, cryoprecipitate use, and tranexamic acid [TXA] use) with mortality at 24 hours and at discharge. These models controlled for known potential confounders specified a priori for each primary predictor and outcome. Transfusion ratios were defined as the ratio of RBCs to FFP and the ratio of RBCs to PLT in the first 24 hours. Transfusion ratios were classified as $<1.5:1$ or $>1.5:1$ to mitigate the effect of outliers in the data and create clinically meaningful categories. Because RBC/FFP and RBC/PLT ratios are interrelated, both terms were included in a single variable and categorized as both $<1.5:1$ (reference group), RBC/FFP $\geq 1.5:1$, RBC/PLT $\geq 1.5:1$, or both $\geq 1.5:1$. All multivariable regression models included random effects on site to account for differences by participating center.¹⁴

Lastly, Classification and Regression Trees (CART) recursive partitioning was used to build models predictive of survival to discharge based on available patient characteristics on arrival, including demographics, injury mechanisms, physiologic characteristics, and laboratory parameters. Classification and Regression Tree is a form of machine learning that uses a given set of variables to create validated hierarchical decision trees, which has been applied in a range of disciplines, including in studies of trauma patients.^{15–17} This method was chosen given its utility in determining both variable importance and the optimal cutoff values for each variable for predicting outcome.¹⁵ To determine optimal splits in our predictor variables, the Gini coefficient was used, and cost complexity pruning was performed to prevent overfitting and build the most efficient decision tree.¹⁵ We identified several plausible sets of predictor variables with varying levels of specificity and used cross-validation to select the final predictor set. In the cross-validation, we fit the models using 90% of the patients (randomly selected) and evaluated model accuracy using the remaining 10%. This process was iterated 100 times to determine the mean proportion correct across the 100 test sets. We additionally summarized the final model fit using the area under the receiver operator characteristic curve.

To improve model discrimination, a second CART model was developed using a subset of the patients ($n = 353$) with less than 10% missingness on key admission predictor variables identified in the unpruned classification trees from the whole cohort. Descriptive statistics and multivariable modeling were performed in Stata version 15 (StataCorp, College Station, TX). Classification and Regression Tree analyses were performed using the *rpart* package in R version 3.6.2 (R Foundation for Statistical Computing, Vienna, Austria).^{15,16}

RESULTS

Patient Characteristics and Univariate Analyses

The 461 patients were young with a median age of 35 years, predominantly male, and had few reported comorbidities or

TABLE 1. Characteristics and Outcomes Compared by Mortality at Discharge

Variable	Survived 35% (n = 160)	Expired 65% (n = 301)	All Patients (N = 461)	p
Demographics and past history				
Age, y	33 (26, 44)	38 (25, 52)	35 (25, 50)	0.06
Male	81%	83%	82%	0.53
BMI	27.6 ± 5.6	28 ± 6.0	28.0 ± 6.0	0.23
History of MI or CHF	1%	2%	2%	0.73
History of diabetes	6%	7%	7%	0.83
History of cirrhosis	0%	5%	3%	<0.01
History of cancer	1%	2%	2%	0.65
Antiplatelet agent	5%	6%	6%	0.81
Anticoagulant agent	6%	2%	4%	0.19
Injury characteristics				
ISS	29 (22, 4)	34.0 (25, 43)	33 (22, 43)	<0.01
Severe head injury*	6%	23%	17%	<0.01
Blunt	52%	61%	58%	0.06
Mechanism subtype				
GSW	38%	33%	35%	0.40
SW	6%	4%	4%	
PVA/BVA	9%	12%	11%	
MVC/MCC	34%	39%	38%	
Fall	3%	2%	2%	
Physiologic and laboratory characteristics on arrival				
GCS	14 (4, 15)	3 (3, 13)	7 (3, 14)	<0.01
SBP, mm Hg	90 (76, 113)	90 (69, 109)	90 (70, 110)	0.30
SBP <60 mm Hg	9%	15%	13%	0.08
Heart rate,** bpm	117 (96, 133)	106 (85, 131)	110 (90, 132)	<0.01
Pulseless	2%	7%	5%	0.13
Shock index	1.2 (0.9, 1.6)	1.2 (0.9, 1.6)	1.2 (0.9, 1.6)	0.64
Base excess, mmol/L	-11.7 ± 7.1	-14.5 ± 8.0	-10.8 ± 6.7	<0.01
Lactate, mmol/L	7.3 (4.5, 11.7)	10.5 (6.5, 14.3)	9.1 (5.8, 13.3)	<0.01
Hemoglobin, g/dL	11.3 ± 2.6	10.4 ± 2.6	10.9 ± 2.6	<0.01
Platelet count, ×10 ⁹ /L	192 (127, 245)	152 (91, 214)	172 (107, 224)	<0.01
INR	1.3 (1.1–1.6)	1.4 (1.2–1.9)	1.4 (1.2–1.8)	<0.01
Procedures				
Exploratory laparotomy	61%	62%	62%	0.76
Resuscitative thoracotomy	14%	42%	32%	<0.01
REBOA	8%	11%	10%	0.32
Aorta cross clamped†	14%	31%	25%	<0.01
Transfusion characteristics (24 h)				
RBC/PLT continuous, median (IQR)	1.1 (0.9–1.4)	1.3 (1.0–1.9)	1.2 (1.0–1.8)	<0.01
RBC/FFP continuous, median (IQR)	1.2 (1.1–1.5)	1.3 (1.1–1.7)	1.3 (1.1–1.7)	<0.01
RBCs, median (IQR), U	29 (23–39)	30 (24–41)	29 (24–40)	0.33
Platelets, median (IQR), U	26 (18–36)	18 (12–30)	24 (18–36)	<0.01
FFP, median (IQR), U	22 (18–31)	21 (16–31)	22 (17–31)	0.13
RBC/FFP ratio ≥1.5:1	28%	39%	35%	0.02
RBC/PLT ratio ≥1.5:1	23%	43%	36%	<0.01
RBC/PLT or RBC/FFP ratio ≥1.5:1	40%	59%	52%	<0.01
RBC/FFP and RBC/PLT ratio ≥1.5:1	10%	22%	18%	<0.01
Hemostatic adjunct use (24 h)				
Tranexamic acid	63%	63%	63%	1.00
Factor VII	3%	5%	4%	0.28
Prothrombin complex concentrate	4%	2%	2%	0.24
Cryoprecipitate	81%	66%	71%	<0.01
Viscoelastic testing performed (TEG/ROTEM)	41%	36%	38%	0.39

Continued next page

TABLE 1. (Continued)

Variable	Survived 35% (n = 160)	Expired 65% (n = 301)	All Patients (N = 461)	p
Outcomes				
Sepsis	41%	8%	19%	<0.01
Acute kidney injury	44%	20%	28%	<0.01
Myocardial infarction	1%	3%	2%	0.27
Stroke	5%	2%	3%	0.17
Venous thromboembolism	28%	5%	13%	<0.01
Mortality at 6 h	0%	41%	27%	<0.01
Mortality at 24 h	0%	66%	43%	<0.01
Mortality at discharge	0%	100%	65%	<0.01

*Severe head injury defined as head AIS of ≥ 5 .

**Patients who presented in arrest or pulseless included with heart rate of 0.

†Aortic cross clamping does not include patients who underwent REBOA but includes patients who had cross clamping of the aorta during resuscitative thoracotomy or exploratory laparotomy.

Shock Index indicates heart rate/systolic blood pressure, max shock index of 2.0, and patients pulseless or without measurable blood pressure on arrival assigned shock index of 2.0.

AIS, Abbreviated Injury Scale; BMI, body mass index; CHF, congestive heart failure; GSW, gunshot wound; INR, international normalized ratio; MI, myocardial infarction; MVC/MCC, motor vehicle collision or motorcycle collection; PVA/BVA, pedestrian vs. auto or bike vs. auto; REBOA, resuscitative endovascular occlusion of the aorta; ROTEM, rotational thromboelastometry; SBP, systolic blood pressure; SW, stab wound; TEG, thromboelastography.

antiplatelet/anticoagulant medication use (Table 1). The patients were severely injured (median Injury Severity Score [ISS], 33), had a median GCS score of 7 on arrival, and had evidence of significant shock and impaired tissue perfusion by several parameters (Table 1); also, 17% had severe head injury (defined by head Abbreviated Injury Scale of ≥ 5). Resuscitative thoracotomy was performed in 32% of patients, while 10% had resuscitative endovascular balloon occlusion of the aorta performed (Table 1). Patients were transfused a mean of 29 U of RBCs, 22 U of FFP, and 24 U of PLTs within 24 hours of arrival (Table 1). Thirty-five percent of patients had RBC/FFP ratios of $\geq 1.5:1$, 36% had RBC/PLT ratios of $\geq 1.5:1$, 52% had either ratio $>1.5:1$, and 18% had both ratios $\geq 1.5:1$ (Table 1 and Fig. 1). Tranexamic acid and cryoprecipitate were administered in the majority of patients, while only a small proportion received recombinant factor VII or prothrombin complex concentrate (Table 1). Mortality was high at 43% at 24 hours and 65% by discharge, and complications were common among those who survived including acute kidney injury (44%), sepsis (41%), and venous thromboembolism (28%, Table 1).

In univariate analysis, patients who died before hospital discharge were older, more severely and bluntly injured, and

had lower GCS, hemoglobin, and platelet counts on arrival (Table 1). Those who died also had more evidence of tissue hypoperfusion with higher base deficit and lactate, but systolic blood pressure was not different between the groups. However, those who died were more likely to present hypotensive (systolic blood pressure, < 60 mm Hg) or pulseless (Table 1). Forty-two percent of nonsurvivors underwent a resuscitative thoracotomy compared with 14% of those who survived to discharge ($p < 0.01$), while rates of exploratory laparotomy and resuscitative endovascular balloon occlusion of the aorta were not different (Table 1). With respect to transfusion ratios, there were significant trends for increased proportion of patients with unbalanced RBC/FFP and RBC/PLT ratios in association with mortality at discharge (Table 1). Tranexamic acid, factor VII, and prothrombin complex concentrate use were not different, but cryoprecipitate use was significantly higher among those who survived ($p < 0.01$, Table 1).

Association of Transfusion Ratios, Cryoprecipitate, and TXA with Outcomes

Multivariable logistic regression was used to test the association of transfusion ratios and hemostatic adjunct use with

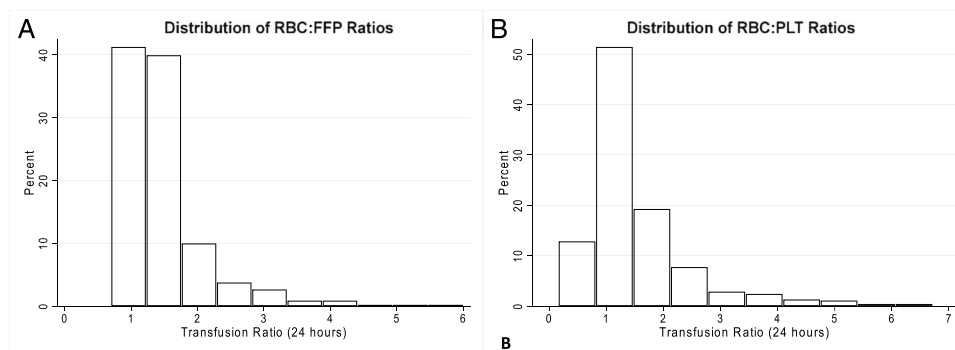


Figure 1. Distribution of RBC/FFP and RBC/PLT ratios. One patient with RBC/PLT ratio of 19 and four patients with RBC/FFP ratio of >10 not displayed. N = 461.

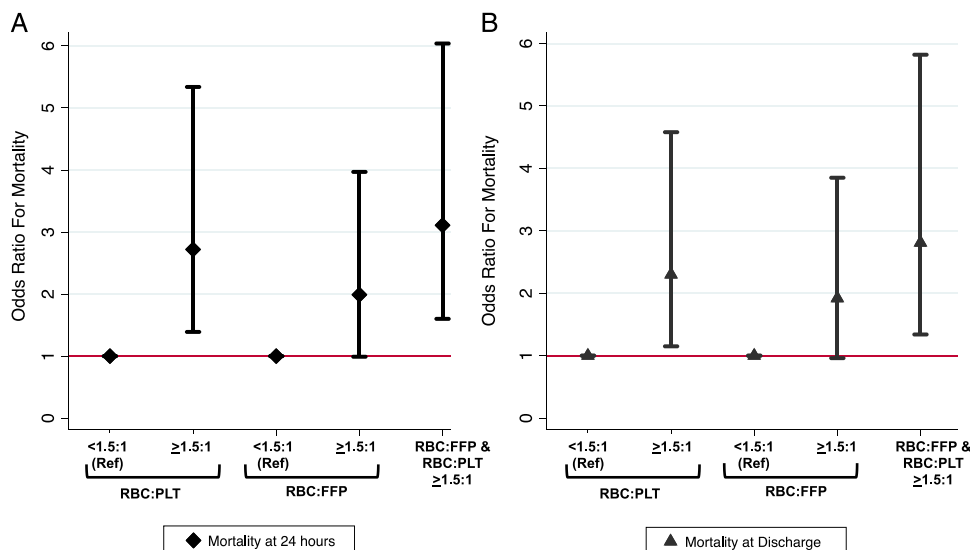


Figure 2. Association of transfusion ratios with mortality at 24 hours and discharge. Plots display the point estimates (diamonds and triangles) with surrounding 95% confidence intervals for the odds ratios for mortality at 24 hours (black diamonds, A) and at discharge (gray triangles, B) for RBC/PLT and RBC/FFP ratios categorized as <1.5:1 or >1.5:1 or both ≥1.5:1. Odds ratios based on multivariable logistic regression controlling for age, injury severity, blunt mechanism, shock index, and resuscitative thoracotomy with a random-effect variance parameter to control for intersite differences. See Supplementary Table 2 (<http://links.lww.com/TA/B920>) for the complete regression model output.

mortality at 24 hours and at discharge. Red blood cell/PLT ratios ≥1.5:1 were significantly and independently associated with more than twofold increased odds of mortality at 24 hours and discharge ($p < 0.05$; Fig. 2 and Supplementary Table 2, <http://links.lww.com/TA/B920>). Red blood cell/FFP ratios ≥1.5:1 showed a similar trend, statistically significant for mortality at 24 hours ($p = 0.05$; Fig. 2 and Supplementary Table 2, <http://links.lww.com/TA/B920>). The combination of both RBC/PLT and RBC/FFP transfused in ratios ≥1.5 was associated with 3.1- and 2.8-fold increased odds of death at 24 hours and discharge, respectively ($p < 0.01$; Fig. 2 and Supplementary Table 2, <http://links.lww.com/TA/B920>).

While cryoprecipitate use was significantly associated with reduced mortality at 24 hours and discharge on univariate analysis, on multivariable regression and when excluding early deaths (within 6 hours) to account for survival bias (given that cryoprecipitate is administered later in participating centers' MTP protocols), these trends toward reduced mortality in patients

receiving cryoprecipitate were not statistically significant (Table 2). There was a nonsignificant trend toward decreased mortality at 24 hours in those who received TXA and no difference in mortality at discharge (Table 3). We also examined whether cryoprecipitate and TXA were associated with venous thromboembolism in patients surviving beyond 24 hours, but there were no significant associations of either cryoprecipitate or TXA use with thromboembolism (Supplementary Tables 3 and 4, <http://links.lww.com/TA/B920>).

CART Models

Lastly, CART models were created using physiologic and patient characteristics on arrival that were predictive of survival to discharge. The final pruned classification tree included arrival GCS, age, resuscitative thoracotomy, and platelet count as key discriminatory variables in predicting outcome (Fig. 3). Patients with the best survival (71%) were those who had an initial GCS

TABLE 2. Association of Cryoprecipitate With Mortality at 24 Hours and Discharge

Covariate	Mortality at 24 h			Mortality at Discharge		
	Odds Ratio	95% CI	<i>p</i>	Odds Ratio	95% CI	<i>p</i>
Cryoprecipitate transfused	0.72	0.38–1.37	0.32	0.79	0.43–1.44	0.43
Age (per 10 y)	1.17	1.00–1.37	0.05	1.33	1.14–1.55	<0.01
ISS (per 10 points)	0.88	0.73–1.08	0.22	1.28	1.06–1.54	0.01
Blunt mechanism	1.76	0.92–3.34	0.09	1.70	0.97–2.99	0.06
Shock index	1.55	0.83–2.90	0.17	0.92	0.52–1.63	0.78
Resuscitative thoracotomy	4.21	2.26–7.84	<0.01	7.19	3.84–13.47	<0.01

n = 312. Patients expiring within 6 hours were excluded to control for selection bias in administration of cryoprecipitate.

Shock Index indicates heart rate/systolic blood pressure, max shock index of 2.0, and patients pulseless or without measurable blood pressure on arrival assigned shock index of 2.0.

CI, confidence interval.

TABLE 3. Association of Tranexamic Acid With Mortality at 24 Hours and Discharge

Covariate	Mortality at 24 h			Mortality at discharge		
	Odds Ratio	95% CI	p	Odds Ratio	95% CI	p
Tranexamic acid given	0.71	0.43–1.20	0.20	1.00	0.59–1.67	0.99
Age (per 10 y)	1.01	0.99–1.03	0.25	1.02	1.01–1.04	0.01
ISS (per 10 points)	1.01	0.99–1.02	0.57	1.02	1.00–1.04	0.02
Blunt mechanism	0.96	0.55–1.67	0.89	1.21	0.69–2.10	0.51
Shock index	1.08	0.62–1.88	0.79	0.84	0.47–1.50	0.56
Resuscitative thoracotomy	6.08	3.51–10.53	0.00	7.35	3.91–13.81	0.00

N = 334. Multivariable logistic regression output with random-effect variance parameter by site.

Shock Index indicates heart rate/systolic blood pressure, max shock index of 2.0, and patients pulseless or without measurable blood pressure on arrival assigned shock index of 2.0. CI, confidence interval.

score of above 3, were younger than 50 years, did not undergo a resuscitative thoracotomy, and were not thrombocytopenic on arrival (Fig. 3). On the other hand, patients with any combination of these factors had significantly poorer survival ranging from 14% to 26% (Fig. 3). Classification and Regression Tree models with a subset of the cohort (n = 353) with more complete data on these key predictors (<10%) were developed to improve model discrimination and performance. With this subset of the cohort, we additionally identified that, for patients not undergoing resuscitative thoracotomy, but with a GCS score of 3 on arrival, hemoglobin and injury mechanism provided additional stratification of mortality risk: patients with a hemoglobin on arrival <11.0 g/dL had a poor predicted survival of just 11%, while patients with hemoglobin of ≥11.0 g/dL and a penetrating mechanism of injury had high survival rates (75%), despite their initial GCS score of 3 (Fig. 4).

DISCUSSION

In this study, we investigated predictors of mortality in a modern cohort of injured patients receiving an UMT, defined as ≥20 U of RBCs during the initial 24 hours of their resuscitation. Mortality rate at discharge was high at 65% and similar to mortality rates of 60% to 70% in the only three published prior studies of UMT spanning the 1990s to early 2010s.^{10–12} This lack of improved mortality despite advances in trauma and critical care may be attributable to several factors. Patients in this study had higher ISSs (ISS of 34 vs. 29 in studies by Yu et al.¹² and Velmahos et al.¹¹) and lower median GCS score on arrival (7 vs. 12). Furthermore, unbalanced ratios in large proportion of patients may have also contributed to the persistently high mortality rate, although it is not known what transfusion ratios were achieved in older studies of UMT.

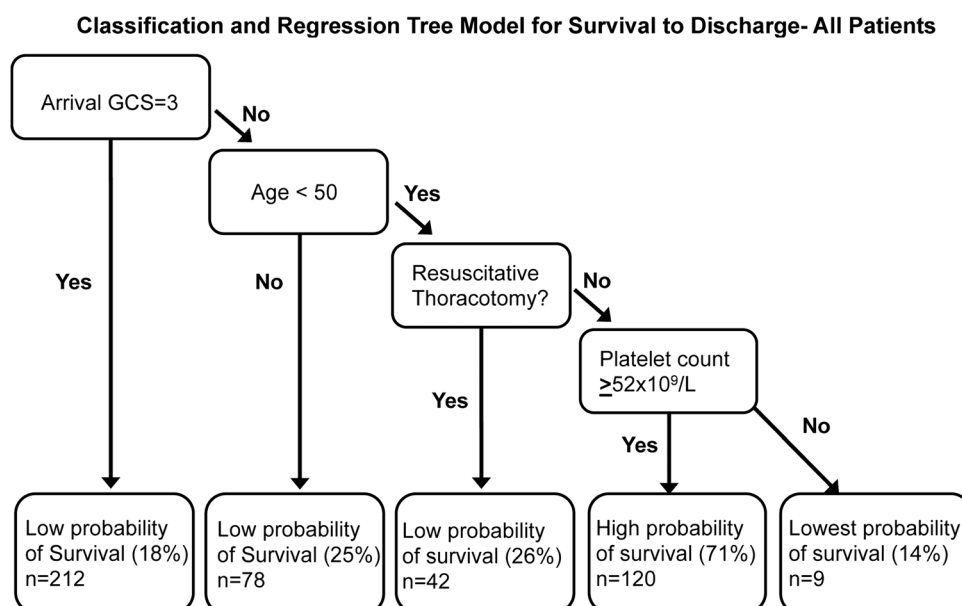


Figure 3. Classification and Regression Tree model predictive for survival to discharge for patients receiving UMT. Gini coefficient used to determine splits with 10-fold cost complexity pruning to develop the trimmed tree. Data divided into a training (90%) and a test set (10%) for validation. Area under the receiver operator characteristic curve, 79%; mean fraction correct in 100 iterations of test set, 76%. Includes all 461 patients.

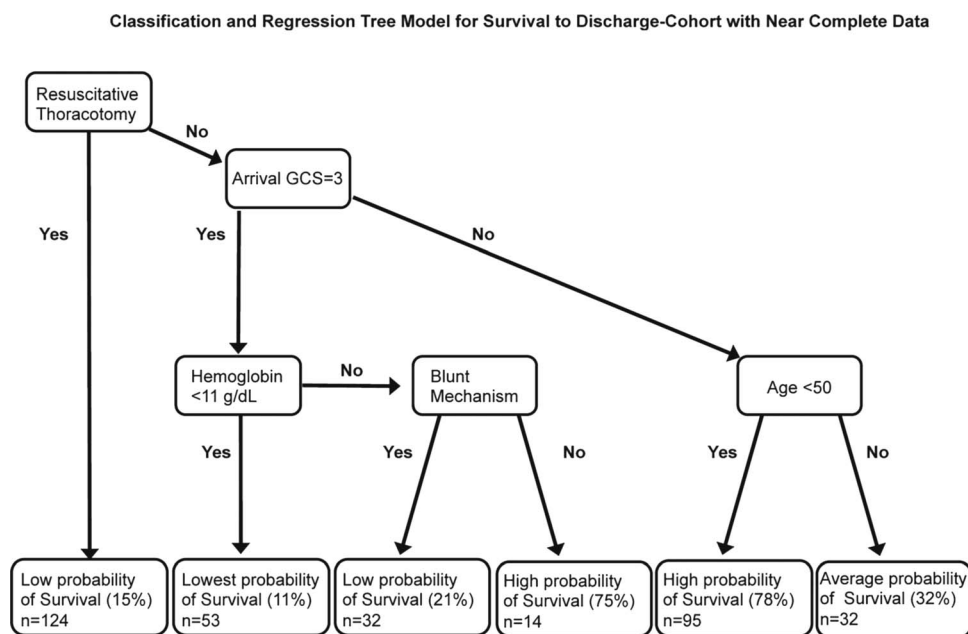


Figure 4. Classification and Regression Tree model predictive for survival to discharge for patients receiving UMT. Gini coefficient used to determine splits with 10-fold cost complexity pruning to develop the trimmed tree. Data divided into a training (90%) and a test set (10%) for validation. Area under the receiver operator characteristic curve, 77%; mean fraction correct in 100 iterations of test set, 76%. Includes subset of patients ($n = 353$) with near complete data ($<10\%$) for admission physiologic and injury characteristics.

The benefit of damage-control resuscitation practices with initial empiric balanced transfusion ratios is well established for traumatic hemorrhage,^{6,7,9} but to our knowledge, this is the first study to assess how transfusion ratios may impact mortality in the unique subset of trauma patients receiving UMT. We demonstrate that unbalanced transfusion ratios are associated with more than twofold increased mortality compared with balanced transfusion ratios. This finding was stronger for RBC/PLT ratios than for RBC/FFP ratios, consistent with prior observational studies of the effects of transfusion ratios in trauma patients,^{9,18} and patients with both ratios ≥ 1.5 had the highest associated increased mortality. These relationships persisted even when controlling for age, injury mechanism and severity, degree of shock, and resuscitative thoracotomy. Despite all participating sites having MTPs with balanced blood product allocation algorithms in place before the start of our study period, 52% of patients still received either RBC/PLT or RBC/FFP $\geq 1.5:1$, although the transfusion ratios are significantly improved compared with historical observational studies of massive transfusion in trauma.^{9,18} Unbalanced transfusion ratios during UMT events may be due to lack of availability of specific blood products because local blood bank resources are depleted, due to rapid rates of hemorrhage and hemodynamic compromise hindering providers' ability to track and adjust transfusion ratios in real time, due to transition to goal-directed resuscitation, due to death before the balancing of ratios, or due to a combination of these factors. Increasing the number of immediately available blood products has been shown to improve transfusion ratios for massively and ultramassively transfused patients and may represent one important area for improving the implementation of balanced resuscitation during UMT.¹⁹

There was a strong association in univariate analysis between cryoprecipitate use and mortality, but this was mostly explained by differences in rates of cryoprecipitate administration based on survival beyond 6 hours. This likely reflects a survival bias rather than a treatment effect because cryoprecipitate tends to be administered at significantly later time points in our center's MTP protocols, precluding patients who die early from receiving it. Cryoprecipitate use has been shown to be beneficial in severe trauma,^{20,21} although further studies are needed to determine if early "off-label" empiric administration in the absence of documented hypofibrinogenemia is feasible and effective in massively bleeding trauma patients.²² The majority of patients also received TXA in our study, with modest and nonsignificant trends for improved 24-hour mortality, although our sample size was not powered to detect the known small effect sizes observed in large studies of TXA in trauma patients.^{23,24}

We identified several factors on CART analysis that were predictive of mortality with the initial and most important split on admission GCS score of 3, followed by age older than 50 years, resuscitative thoracotomy, and the presence of thrombocytopenia. Although none of the resultant combinations of risk could definitively predict mortality or survival, patients with none of these risk factors had good survival (71%) irrespective of other baseline physiologic characteristics, while patients with one or more of these predictors experienced poor to below average survival (14–26%). In the subset of patients with more complete data on admission physiologic characteristics, additional factors identified included an initial hemoglobin of less than 11 g/dL and blunt mechanisms of injury as predictors of mortality in patients not undergoing resuscitative thoracotomy, but with arrival GCS score of 3. While these models should not replace clinical judgment for any given patient, they

are of prognostic value and may assist decision making, particularly in the setting of constrained resources and blood bank shortages (such as during the current coronavirus disease 2019 pandemic).²⁵

Notably, total volume of blood transfused was a weak predictor of mortality in CART models, and it was not a significant predictor in our multivariable regression models. This finding is consistent with prior studies of UMT; for example, Yu et al.¹² found that total RBCs more than 35 U had an area under the receiver operator characteristic curve of just 0.54 for predicting mortality. In our study, 15 patients received more than 75 U of RBCs, and 4 survived (27%). This further highlights that patient demographic and clinical characteristics such as age, GCS, hemoglobin and platelet counts, and whether a resuscitative thoracotomy is performed should be considered for prognostication purposes, rather than total units transfused specifically for patients who have already received 20 U of RBCs.

Limitations

We recognize some important limitations of this study, including its retrospective nature and that our cohort includes patients from a broad array of trauma centers, which may serve different patient populations. We did account for intersite variation in our analysis, and the multicenter nature of this study may increase external validity and applicability to a wider population of civilian trauma patients receiving UMT. It is also important to note that all patients in the study had to survive long enough to receive at least 20 U of RBCs, and therefore, our findings may not apply to patients with catastrophic traumatic hemorrhage who exsanguinate and die before being transfused 20 U of RBCs. The observed mortality differences in association with transfusion ratios could be due to other factors rather than due to transfusion ratios themselves. Patients receiving balanced ratios may also have been more likely to have been transfused at times when more resources and personnel were available to care for them, and in which the trauma team was more adequately able to adhere to other aspects of their MTP, which may have also driven the improved outcomes for these patients. Furthermore, it is possible that survival bias plays some role in the association of transfusion ratios with mortality in this study; however, this is partially mitigated because all patients had to survive long enough to receive 20 U of RBCs. In addition, sensitivity analyses excluding very early (within 3 hours) and early (within 6 hours) deaths did not suggest the presence of a large degree of survival bias in our multivariable models of transfusion ratios and mortality. The use of viscoelastic testing to guide resuscitation could also impact our results, although we did not find an association between patients who had viscoelastic testing performed and mortality. Use of viscoelastic testing did not modify the relationship between transfusion ratios and mortality when tested in our logistic regression models, but we did not have sufficient data on specific viscoelastic testing results to perform a more detailed analysis. Lastly, several patients had significant missing data for at least some variables such as temperature and classical coagulation assays, which may have limited model discrimination in CART. Similarly, physiologic and laboratory data were not sufficiently available at serial time points to further enhance this analysis and investigate how transfusion ratios might impact these parameters over time.

CONCLUSION

In conclusion, while mortality remains high for patients receiving UMT, we demonstrate strong independent associations of balanced transfusion ratios with improved mortality in this large multicenter study, which is particularly important given the high rate of unbalanced transfusion ratios in this modern cohort of patients. While prospective randomized studies would be needed to definitively establish causality in these relationships, this may not be practical given the rare occurrence of UMT and challenges in implementing such trials in these patients. Lastly, while no single variable or set of physiologic findings can perfectly predict survival, we identified a limited set of readily available patient characteristics that can aid in prognostication in the setting of resource limitations and when difficult decisions regarding blood allocation need to be considered.

AUTHORSHIP

Z.A.M., Z.J.H., and L.Z.K. participated in study design, data analysis and interpretation, and article preparation. All authors participated in data acquisition and critical revisions of the article.

ACKNOWLEDGMENTS

We thank the Eastern Association for the Surgery of Trauma, Rachel Dixon, and Michael Matthews.

DISCLOSURE

L.Z.K. is supported by NIH 1K23GM130892-01. The authors declare no conflicts of interest.

REFERENCES

1. Callcut RAM, Kornblith LZM, Conroy ASB, et al. The why and how our trauma patients die: a prospective Multicenter Western Trauma Association study. *J Trauma Acute Care Surg*. 2019;86(5):864–870.
2. Dente CJ, Shaz BH, Nicholas JM, et al. Improvements in early mortality and coagulopathy are sustained better in patients with blunt trauma after institution of a massive transfusion protocol in a civilian level I trauma center. *J Trauma*. 2009;66(6):1616–1624.
3. Callcut RA, Johannigman JA, Kadon KS, Hanseman DJ, Robinson BR. All massive transfusion criteria are not created equal: defining the predictive value of individual transfusion triggers to better determine who benefits from blood. *J Trauma*. 2011;70(4):794–801.
4. Callcut RA, Cotton BA, Muskat P, et al. Defining when to initiate massive transfusion: a validation study of individual massive transfusion triggers in PROMMTT patients. *J Trauma Acute Care Surg*. 2013;74(1):59–65, 7-8; discussion 6-7.
5. Bawazeer M, Ahmed N, Izadi H, McFarlan A, Nathens A, Pavenski K. Compliance with a massive transfusion protocol (MTP) impacts patient outcome. *Injury*. 2015;46(1):21–28.
6. Holcomb JB, Tilley BC, Baraniuk S, et al. Transfusion of plasma, platelets, and red blood cells in a 1:1:1 vs a 1:1:2 ratio and mortality in patients with severe trauma: the PROPPR randomized clinical trial. *JAMA*. 2015;313(5):471–482.
7. Holcomb JB, del Junco DJ, Fox EE, et al. The prospective, observational, multicenter, major trauma transfusion (PROMMTT) study: comparative effectiveness of a time-varying treatment with competing risks. *JAMA Surg*. 2013;148(2):127–136.
8. Mesar T, Larentzakis A, Dzik W, Chang Y, Velmahos G, Yeh DD. Association between ratio of fresh frozen plasma to red blood cells during massive transfusion and survival among patients without traumatic injury. *JAMA Surg*. 2017;152(6):574–580.
9. Holcomb JB, Zarzabal LA, Michalek JE, et al. Increased platelet:RBC ratios are associated with improved survival after massive transfusion. *J Trauma*. 2011;71(2 Suppl 3):S318–S328.
10. Dzik WS, Ziman A, Cohn C, et al. Survival after ultramassive transfusion: a review of 1360 cases. *Transfusion*. 2016;56(3):558–563.

11. Velmahos GC, Chan L, Chan M, Tatevossian R, Cornwell EE3rd, Asensio JA, Berne TV, Demetriades D. Is there a limit to massive blood transfusion after severe trauma? *Arch Surg*. 1998;133(9):947–952.
12. Yu AJ, Inaba K, Biswas S, de Leon LA, Wong M, Benjamin E, Lam L, Demetriades D. Supermassive transfusion: a 15-year single center experience and outcomes. *Am Surg*. 2018;84(10):1617–1621.
13. Ngo A, Masel D, Cahill C, Blumberg N, Refaai MA. Blood banking and transfusion medicine challenges during the COVID-19 pandemic. *Clin Lab Med*. 2020;40(4):587–601.
14. Feaster DJ, Mikulich-Gilbertson S, Brincks AM. Modeling site effects in the design and analysis of multi-site trials. *Am J Drug Alcohol Abuse*. 2011;37(5):383–391.
15. Therneau T, Atkinson B, Ripley B. Recursive Partitioning and Regression Trees 2019. Available at: <https://CRAN.R-project.org/package=rpart>. Accessed June 1, 2020.
16. Servia L, Montserrat N, Badia M, Llopart-Pou JA, Barea-Mendoza JA, Chico-Fernandez M, Sanchez-Casado M, Jimenez JM, Mayor DM, Trujillano J. Machine learning techniques for mortality prediction in critical traumatic patients: anatomic and physiologic variables from the RETRAUCI study. *BMC Med Res Methodol*. 2020;20(1):262.
17. Hsu CH, Haac BE, Drake M, et al. EAST Multicenter Trial on targeted temperature management for hanging-induced cardiac arrest. *J Trauma Acute Care Surg*. 2018;85(1):37–47.
18. Holcomb JB, Wade CE, Michalek JE, et al. Increased plasma and platelet to red blood cell ratios improves outcome in 466 massively transfused civilian trauma patients. *Ann Surg*. 2008;248(3):447–458.
19. Allen CJ, Shariatnadar S, Meizoso JP, Hanna MM, Mora JL, Ray JJ, Namias N, Dudaryk R, Proctor KG. Liquid plasma use during “super” massive transfusion protocol. *J Surg Res*. 2015;199(2):622–628.
20. Sugiyama K, Fujita H, Nishimura S. Effects of in-house cryoprecipitate on transfusion usage and mortality in patients with multiple trauma with severe traumatic brain injury: a retrospective cohort study. *Blood Transfus*. 2020;18(1):6–12.
21. Inokuchi K, Sawano M, Yamamoto K, Yamaguchi A, Sugiyama S. Early administration of fibrinogen concentrates improves the short-term outcomes of severe pelvic fracture patients. *Acute Med Surg*. 2017;4(3):271–277.
22. Curry N, Foley C, Wong H, et al. Early fibrinogen concentrate therapy for major haemorrhage in trauma (E-FIT 1): results from a UK multi-centre, randomised, double blind, placebo-controlled pilot trial. *Crit Care*. 2018;22(1):164.
23. CRASH-2 trial collaborators, Shakur H, Roberts I, Bautista R, et al. Effects of tranexamic acid on death, vascular occlusive events, and blood transfusion in trauma patients with significant haemorrhage (CRASH-2): a randomised, placebo-controlled trial. *Lancet*. 2010;376(9734):23–32.
24. Ramirez RJ, Spinella PC, Bochicchio GV. Tranexamic acid update in trauma. *Crit Care Clin*. 2017;33(1):85–99.
25. Stanworth SJ, New HV, Apolseth TO, et al. Effects of the COVID-19 pandemic on supply and use of blood for transfusion. *Lancet Haematol*. 2020;7(10):e756–e764.